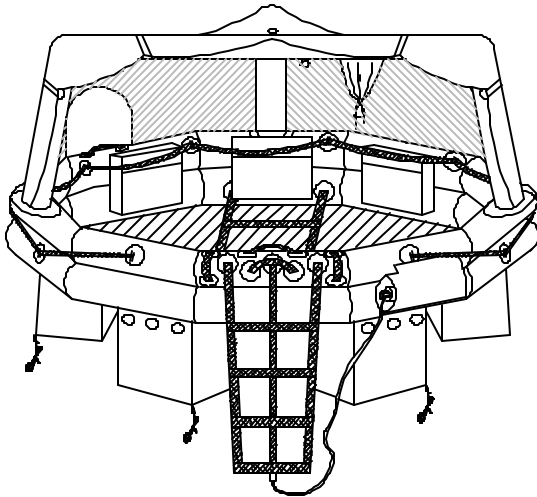
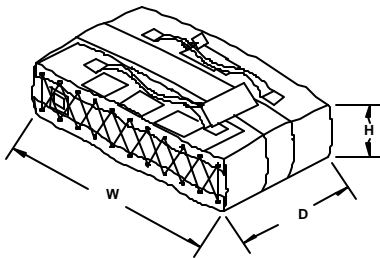


STANDARD EQUIPMENT Includes:

- CO₂/N₂ Inflation System w/ Twin Oversized Buoyancy Tubes
- Three (3) Position (Closed, Sail & Convertible) Light Weight Canopy w/ Cinch Strap
- Sure-Seal™ Closures w/ #10 YKK Heavy Duty Zippering
- Dual Main Zipper w/ Ventilation Tie Backs
- Tripod Arch, Auto Inflatable, Canopy Support System w/ Stay Erect Arch Support Valve System
- Oversized Front Boarding Entry w/ 4 Rung Boarding Ladder
- Interior Assist Ladder w/ Quick-Release Fittings
- Rear Boarding Door w/ 3 Rung Boarding Ladder
- Five (5) Bowed Boarding Assist Handles
- Combination Foul Weather Observation Port Hole & Water Collection System w/ Sure-Seal™ Closures
- I2DF™ Inflatable Insulated Double Floor
- Water Activated Interior/Exterior Survivor Locator Lights
- Quick-Grab™ Pelican® Super MityLite™ Flashlight On Arch
- Auto-Deploying Hemispherical Drogue (Sea-Anchor) w/ 25' Line & Dual Anti-Foul Swivels
- 75' Floating Heaving Trailing Line w/ Buoyant Throwing Handle
- 35' Painter Line w/ Quick-Release Fittings
- Heavy Duty EZGrip™ Righting Line w/ Contrasting Bowed Hand Grips
- Unidirectional Retro/Radar Reflective Segment Across Arch
- Unidirectional Retro Reflective Segments Under Life Raft & On Canopy
- Pentagonal Ballast System™
- 1" Exterior Lifelines & Interior Grasp Lines
- Five (5) StoreSafe™ Light Weight Dry Survival Gear Storage Pockets
- Pressure Relief Valves
- Topping-Up Valves
- Urethane Valise



NOT TO SCALE



Part 91 & 121 SEP Kit Includes:

- ① Manual Inflation Pump – Spring Loaded Return w/ Adapter
- ① Raft Knife
- ① Repair Kit (Includes: Repair Tape, Repair Clamp (3") & 2 PRV Plugs w/ Tether)
- ① Collapsible Bailer Bucket w/ Handle
- ② Sponges
- ① Signal Mirror
- ① Rescue Streamer™ High Visibility Ribbon (6" X 25')
- ① USCG/SOLAS Whistle
- ① Oral Inflation Tube
- ① Extended Life Flashlight (Sealed Case)
- ② Spare Alkaline Batteries & Spare Super MityLite™ Xenon Bulb Assembly
- ③ USCG Aerial Meteor Flares
- ① USCG Hand Held Locator Flare
- Food Ration Bars (250 Cal./Person)
- Anti-Seasickness Tablets (6/Person)
- ① Utility Knife (SS Lockback)
- ① Retaining Line (75')
- ① Survival Manual
- ① Bible
- ① Survivor® "06" Watermaker

Part 135 SEP Kit Includes 91/121 Plus:

- ① Fishing Kit
- Food Ration Bars (1750 Cal./Person)
- ① Sea-Dye Marker
- ① Water Storage Bag
- ① Magnetic Compass
- ② Paddles w/ Retro Reflective Segments
- ① First Aid Kit: [First Aid/Burn Cream Packets (12), Antiseptic Towelettes (10), 1" X 3" Adhesive Strips (16), Nitrile Gloves (1 pair), Sterile Triangular Bandage, 4" Bandage Compress, First Aid Guide]

JAR-OPS1 SEP Kit Includes 91/121 Plus:

- ⑤ Additional USCG Aerial Meteor Flares
- ① Additional USCG Hand Held Locator Flare
- ① Water Storage Bag
- 6 Mil Poly Bags (1/Person)
- Food Ration Bars (2000 Cal./Total)
- ① First Aid Kit [Sun block (30SPF), Magnifier, Thermal Blanket, 4" Bandage Compress (4), Sterile Triangular Bandage (2), 2" Bandage Compress (12), Nitrile Gloves (1 pair), Antiseptic Towelettes (10), First Aid/Burn Cream Packets (12), 1" X 3" Adhesive Strips (16), Adhesive Tape, First Aid Guide]

JAR-OPS1/135 SEP Kit Includes 91/121 & JAR-OPS1 Plus:

- ① Fishing Kit
- Food Ration Bars (1750 Cal./Person)
- ① Sea-Dye Marker
- ① Magnetic Compass
- ② Paddles w/ Retro Reflective Segments

CAR SEP Kit Includes 91/121 Plus:

- ① Fishing Kit
- ① First Aid Kit (Same as FAR Part 135)
- ① Sea-Dye Marker
- ① Magnetic Compass
- ② Paddles w/ Retro Reflective Segments

ELT Options:

- Dual Frequency Survival (S) Type ELT, (121.5/243.0MHz) 0.8 lbs. FAA TSO-C91a
- Triple Frequency Survival (S) Type ELT, (121.5/243.0/406MHz) w/ full Speech Capability on 121.5/243MHz - 1.3 lbs. FAA TSO-C91a and C126

Please Note: ELT Requirements May Vary

Custom Dimensional Packing Available

Ultra-Light™ FA-AV (UL) Valise Pack

| Winslow Model | SEP Requirements | Dimension H X D X W | Total Weight | WINSLOW Part Number |
|--|-------------------|------------------------|--------------|---------------------|
| 46FAUL Capacity 4 Ovid. Capacity 6 | FAR PART 91 & 121 | 8" X 17" X 26" | 33 lb. | 46FAUL-*190-1-100 |
| | FAR PART 135 | 8" X 17" X 26" | 38 lb. | 46FAUL-*130-1-100 |
| | JAR-OPS1 | 8" X 17" X 26" | 38 lb. | 46FAUL-*1J0-1-100 |
| | JAR-OPS1/135 | 8" X 17" X 26" | 43 lb. | 46FAUL-*1K0-1-100 |
| 57FAUL Capacity 5 Ovid. Capacity 7 | FAR PART 91 & 121 | 8" X 17" X 27" | 34 lb. | 57FAUL-*190-1-100 |
| | FAR PART 135 | 8" X 17" X 27" | 39 lb. | 57FAUL-*130-1-100 |
| | JAR-OPS1 | 8" X 17" X 27" | 39 lb. | 57FAUL-*1J0-1-100 |
| | JAR-OPS1/135 | 8" X 17" X 27" | 44 lb. | 57FAUL-*1K0-1-100 |
| 69FAUL Capacity 6 Ovid. Capacity 9 | FAR PART 91 & 121 | 8" X 17" X 28" | 46 lb. | 69FAUL-*190-1-100 |
| | FAR PART 135 | 8" X 17" X 28" | 52 lb. | 69FAUL-*130-1-100 |
| | JAR-OPS1 | 8" X 17" X 28" | 50 lb. | 69FAUL-*1J0-1-100 |
| | JAR-OPS1/135 | 8" X 17" X 28" | 57 lb. | 69FAUL-*1K0-1-100 |
| 710FAUL Capacity 7 Ovid. Capacity 10 | FAR PART 91 & 121 | 8" X 17" X 29" | 47 lb. | 710FAUL-*190-1-100 |
| | FAR PART 135 | 8" X 17" X 29" | 53 lb. | 710FAUL-*130-1-100 |
| | JAR-OPS1 | 8" X 17" X 29" | 51 lb. | 710FAUL-*1J0-1-100 |
| | JAR-OPS1/135 | 8" X 17" X 29" | 58 lb. | 710FAUL-*1K0-1-100 |
| 812FAUL Capacity 8 Ovid. Capacity 12 | FAR PART 91 & 121 | 8" X 18" X 33" | 49 lb. | 812FAUL-*190-1-100 |
| | FAR PART 135 | 8" X 18" X 33" | 57 lb. | 812FAUL-*130-1-100 |
| | JAR-OPS1 | 8" X 18" X 33" | 54 lb. | 812FAUL-*1J0-1-100 |
| | JAR-OPS1/135 | 8" X 18" X 33" | 62 lb. | 812FAUL-*1K0-1-100 |
| 913FAUL Capacity 9 Ovid. Capacity 13 | FAR PART 91 & 121 | 8" X 18" X 34" | 50 lb. | 913FAUL-*190-1-100 |
| | FAR PART 135 | 8" X 18" X 34" | 58 lb. | 913FAUL-*130-1-100 |
| | JAR-OPS1 | 8" X 18" X 34" | 55 lb. | 913FAUL-*1J0-1-100 |
| | JAR-OPS1/135 | 8" X 18" X 34" | 63 lb. | 913FAUL-*1K0-1-100 |
| 1015FAUL Capacity 10 Ovid. Capacity 15 | FAR PART 91 & 121 | 9" X 18" X 32" | 54 lb. | 1015FAUL-*190-1-100 |
| | FAR PART 135 | 9" X 18" X 32" | 63 lb. | 1015FAUL-*130-1-100 |
| | JAR-OPS1 | 9" X 18" X 32" | 61 lb. | 1015FAUL-*1J0-1-100 |
| | JAR-OPS1/135 | 9" X 18" X 32" | 68 lb. | 1015FAUL-*1K0-1-100 |
| 1116FAUL Capacity 11 Ovid. Capacity 16 | FAR PART 91 & 121 | 9" X 18" X 32" | 55 lb. | 1116FAUL-*190-1-100 |
| | FAR PART 135 | 9" X 18" X 32" | 64 lb. | 1116FAUL-*130-1-100 |
| | JAR-OPS1 | 9" X 18" X 32" | 62 lb. | 1116FAUL-*1J0-1-100 |
| | JAR-OPS1/135 | 9" X 18" X 32" | 70 lb. | 1116FAUL-*1K0-1-100 |
| 1218FAUL Capacity 12 Ovid. Capacity 18 | FAR PART 91 & 121 | 9" X 18" X 32" | 61 lb. | 1218FAUL-*190-1-100 |
| | FAR PART 135 | 9" X 18" X 32" | 72 lb. | 1218FAUL-*130-1-100 |
| | JAR-OPS1 | 9" X 18" X 32" | 66 lb. | 1218FAUL-*1J0-1-100 |
| | JAR-OPS1/135 | 9" X 18" X 32" | 77 lb. | 1218FAUL-*1K0-1-100 |
| 1320FAUL Capacity 13 Ovid. Capacity 20 | FAR PART 91 & 121 | 9" X 18" X 32" | 62 lb. | 1320FAUL-*190-1-100 |
| | FAR PART 135 | 9" X 18" X 32" | 73 lb. | 1320FAUL-*130-1-100 |
| | JAR-OPS1 | 9" X 18" X 32" | 67 lb. | 1320FAUL-*1J0-1-100 |
| | JAR-OPS1/135 | 9" X 18" X 32" | 78 lb. | 1320FAUL-*1K0-1-100 |
| 1421FAUL Capacity 14 Ovid. Capacity 21 | FAR PART 91 & 121 | 9 ½" X 18" X 32" | 67 lb. | 1421FAUL-*190-1-100 |
| | FAR PART 135 | 9 ½" X 18" X 32" | 80 lb. | 1421FAUL-*130-1-100 |
| | JAR-OPS1 | 9 ½" X 18" X 32" | 72 lb. | 1421FAUL-*1J0-1-100 |
| | JAR-OPS1/135 | 9 ½" X 18" X 32" | 84 lb. | 1421FAUL-*1K0-1-100 |
| 1522FAUL Capacity 15 Ovid. Capacity 22 | FAR PART 91 & 121 | 9 ½" X 18" X 32" | 68 lb. | 1522FAUL-*190-1-100 |
| | FAR PART 135 | 9 ½" X 18" X 32" | 81 lb. | 1522FAUL-*130-1-100 |
| | JAR-OPS1 | 9 ½" X 18" X 32" | 73 lb. | 1522FAUL-*1J0-1-100 |
| | JAR-OPS1/135 | 9 ½" X 18" X 32" | 85 lb. | 1522FAUL-*1K0-1-100 |

*SEP Kit configuration defines type of ELT and applicable regulation as shown below.

Example 1: -230 (Dual Frequency w/ FAR Part 135 compliant SEP Kit) Example 2: -3K0 (Triple Frequency w/ JAR-OPS1 and FAR Part 135 compliant SEP Kit)

•1=No ELT •2=Dual Frequency •3=Triple Frequency •4=Triple Frequency/GPS¹ •5=Triple Frequency/GPS¹ w/ voice

¹Upon Availability

CAR Survival Equipment Packages are also available for WINSLOW Models 46FAUL through 1522FAUL by special request.